







**JohnsGroup**  
Tasmania

**SMG**  
STANTON MANAGEMENT GROUP

**PhilpLighton Architects**

49 Sandy Bay Road, Hobart, Tasmania 7004  
T +61 (3) 6223 2333  
hobart@philplighton.com.au  
**HOBART / LAUNCESTON**

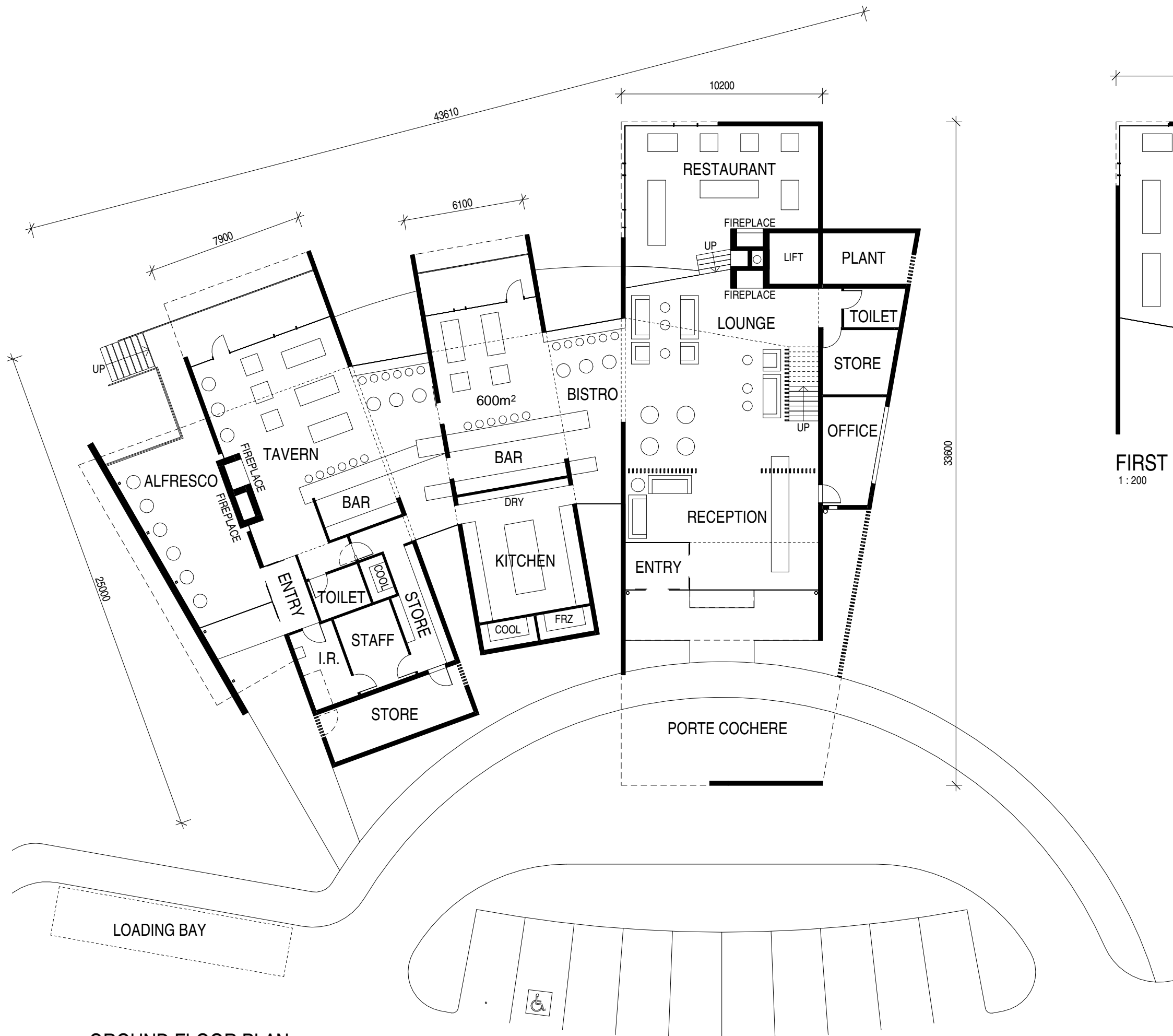
**JOHNS GROUP TASMANIA  
MIENA VILLAGE**

3096 MARLBOROUGH HWY MIENA

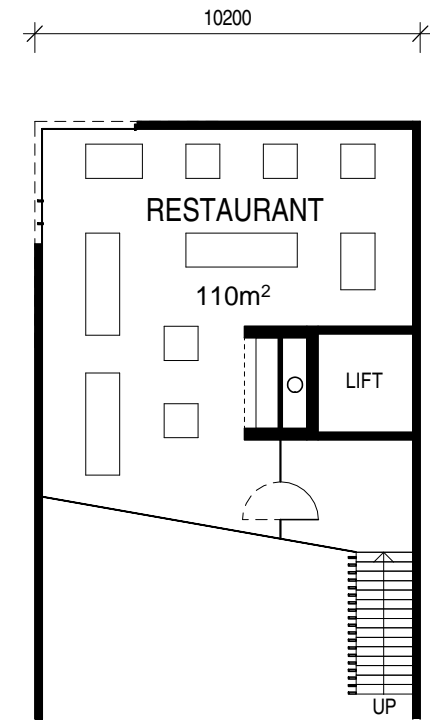
**HOTEL IMAGES**

**Scale** NTS **Date** 12.12.19 **Project** 068.19106

**Drawing No** **DA14** **Rev** -



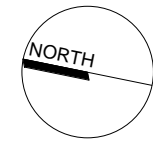
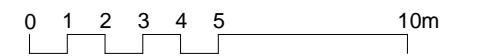
**GROUND FLOOR PLAN**  
1:200



**FIRST FLOOR PLAN**  
1:200

**JohnsGroup**  
Tasmania

**SMG**  
STANTON MANAGEMENT GROUP



**PhilLighton Architects**

49 Sandy Bay Road, Hobart, Tasmania 7004  
T +61 (3) 6223 2333  
hobart@philplighton.com.au  
**HOBART / LAUNCESTON**

**JOHNS GROUP TASMANIA**  
**MIENA VILLAGE**

3096 MARLBOROUGH HWY MIENA

**HOTEL PLANS**

Scale 1 : 200 @ A3 Date 12.12.19 Project 068.19106

Drawing No **DA13** Rev -





**JohnsGroup**  
Tasmania

**SMG**  
STANTON MANAGEMENT GROUP

**PhilpLighton Architects**

49 Sandy Bay Road, Hobart, Tasmania 7004  
T +61 (3) 6223 2333  
hobart@philplighton.com.au  
**HOBART / LAUNCESTON**

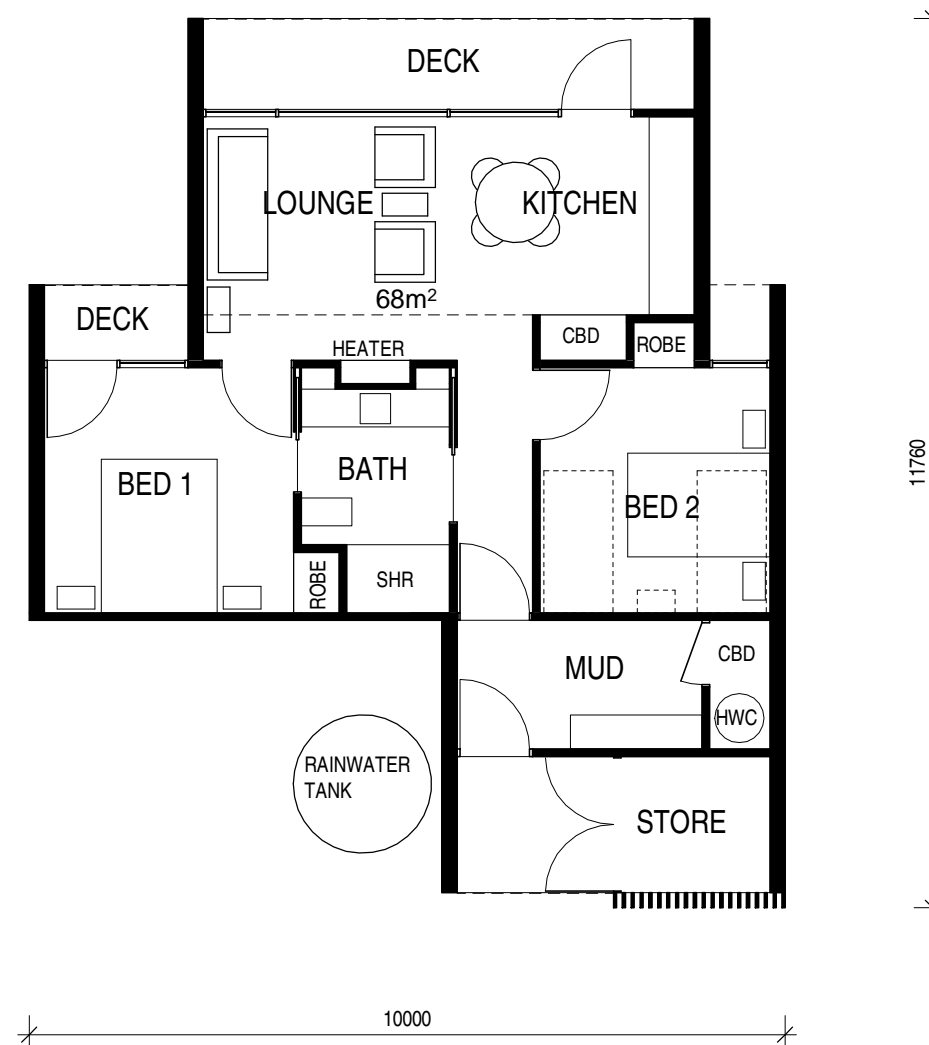
**JOHNS GROUP TASMANIA  
MIENA VILLAGE**

3096 MARLBOROUGH HWY MIENA

**HUT IMAGE**

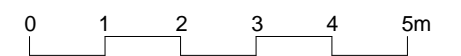
**Scale** NTS **Date** 12.12.19 **Project** 068.19106

**Drawing No** **DA12** **Rev** -



**JohnsGroup**  
Tasmania

**SMG**  
STANTON MANAGEMENT GROUP



**PhilpLighton Architects**

49 Sandy Bay Road, Hobart, Tasmania 7004  
T +61 (3) 6223 2333  
hobart@philplighton.com.au  
**HOBART / LAUNCESTON**

**JOHNS GROUP TASMANIA**  
**MIENA VILLAGE**

3096 MARLBOROUGH HWY MIENA

**HUT PLAN**

**Scale 1 : 100 @ A3 Date 12.12.19 Project 068.19106**

**Drawing No DA11 Rev -**





**JohnsGroup**  
Tasmania

**SMG**  
STANTON MANAGEMENT GROUP

**PhilpLighton Architects**

49 Sandy Bay Road, Hobart, Tasmania 7004  
T +61 (3) 6223 2333  
hobart@philplighton.com.au  
**HOBART / LAUNCESTON**

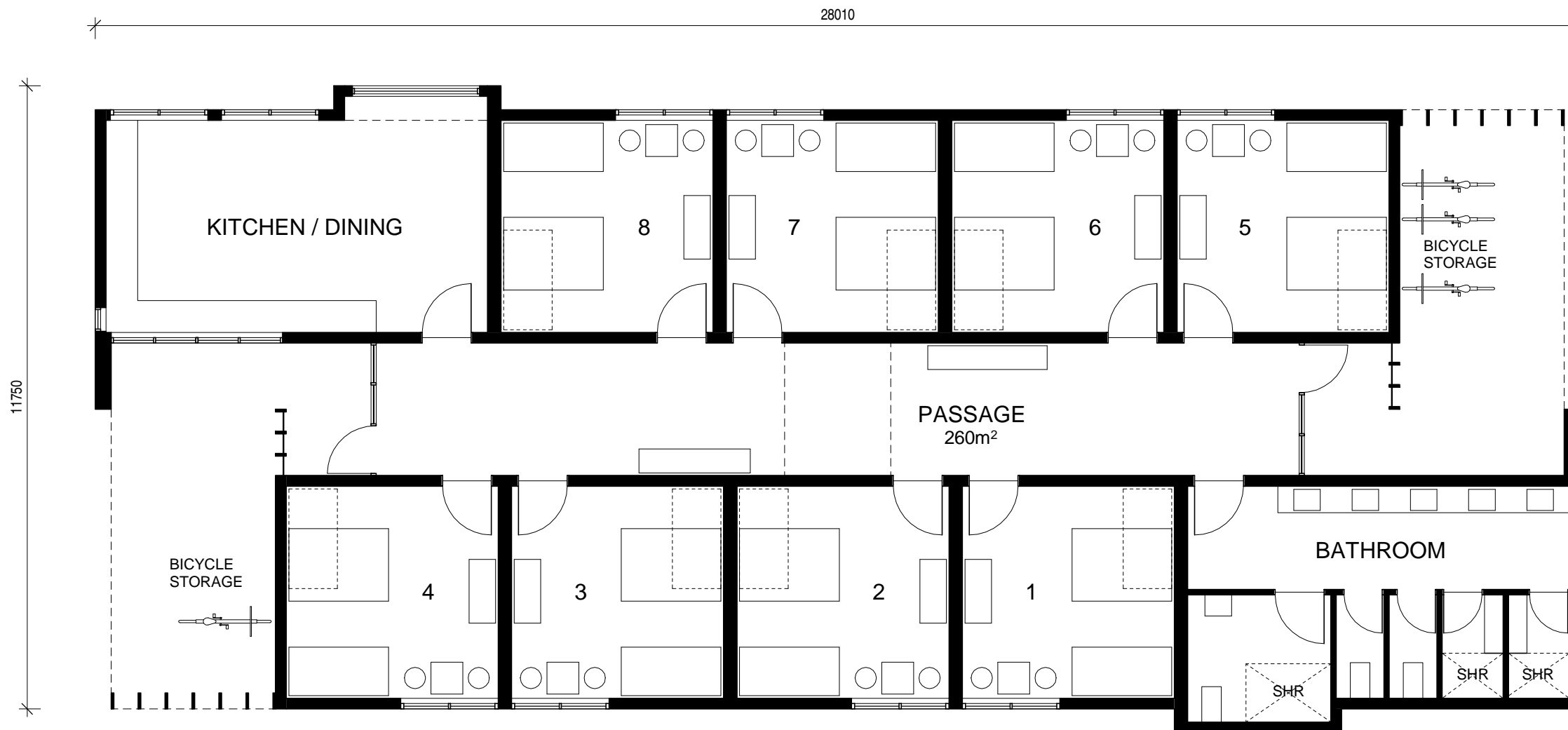
**JOHNS GROUP TASMANIA**  
**MIENA VILLAGE**

3096 MARLBOROUGH HWY MIENA

**LODGE IMAGE**

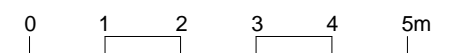
**Scale** NTS **Date** 12.12.19 **Project** 068.19106

**Drawing No** **DA08** **Rev** -



**JohnsGroup**  
Tasmania

**SMG**  
STANTON MANAGEMENT GROUP



**PhilpLighton Architects**

49 Sandy Bay Road, Hobart, Tasmania 7004  
T +61 (3) 6223 2333  
hobart@philplighton.com.au  
**HOBART / LAUNCESTON**

**JOHNS GROUP TASMANIA**  
**MIENA VILLAGE**

3096 MARLBOROUGH HWY MIENA

**LODGE PLAN**

Scale 1 : 100 @ A3 Date 12.12.19 Project 068.19106

Drawing No **DA06** Rev -





**JohnsGroup**  
Tasmania

**SMG**  
STANTON MANAGEMENT GROUP

**PhilpLighton Architects**

49 Sandy Bay Road, Hobart, Tasmania 7004  
T +61 (3) 6223 2333  
hobart@philplighton.com.au  
**HOBART / LAUNCESTON**

**JOHNS GROUP TASMANIA  
MIENA VILLAGE**

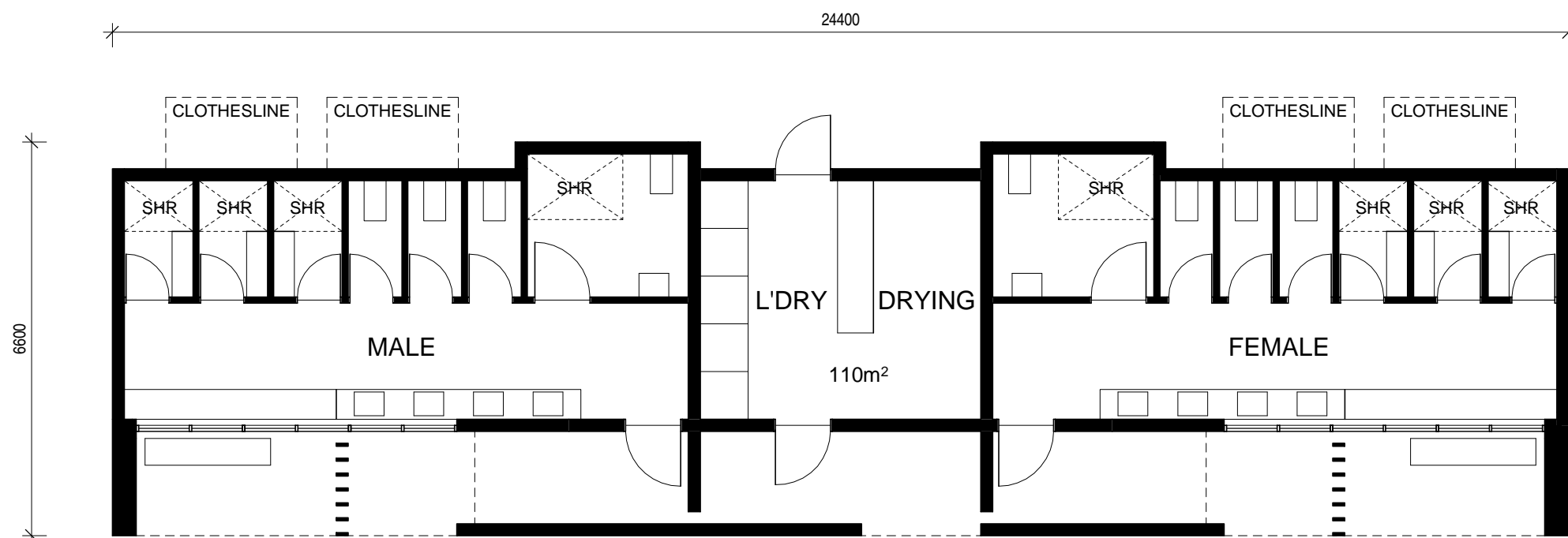
3096 MARLBOROUGH HWY MIENA

**AMENITIES IMAGE**

Scale NTS Date 12.12.19 Project 068.19106

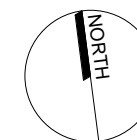
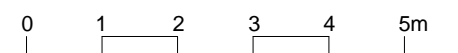
Drawing No **DA10** Rev -





**JohnsGroup**  
Tasmania

**SMG**  
STANTON MANAGEMENT GROUP



**PhilpLighton Architects**

49 Sandy Bay Road, Hobart, Tasmania 7004  
T +61 (3) 6223 2333  
hobart@philplighton.com.au  
**HOBART / LAUNCESTON**

**JOHNS GROUP TASMANIA**  
**MIENA VILLAGE**

3096 MARLBOROUGH HWY MIENA

**AMENITIES PLAN**

Scale 1 : 100 @ A3 Date 12.12.19 Project 068.19106

Drawing No **DA09** Rev -